



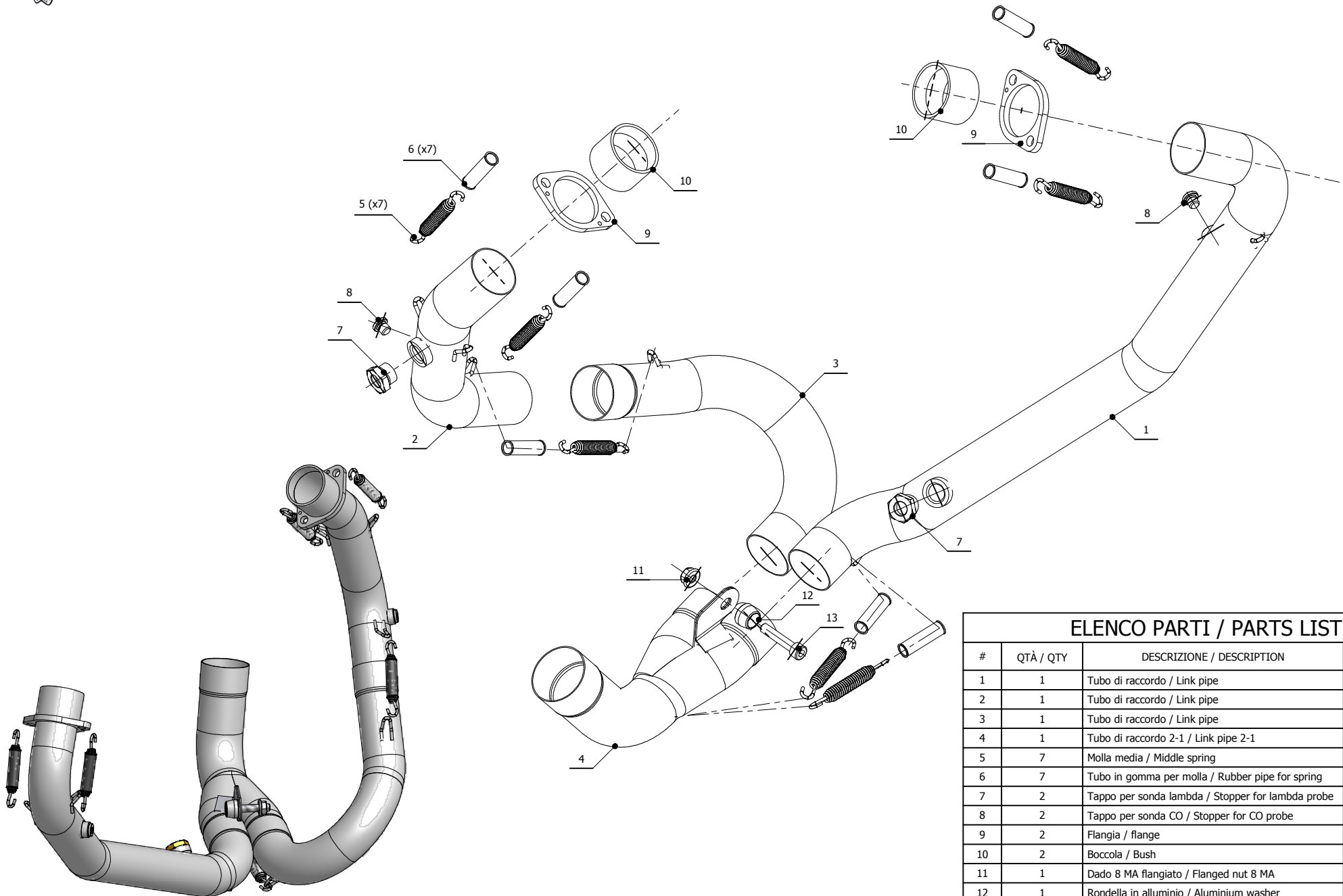
MODEL DUCATI HYPERMOTARD 1100

YEAR 2007-->

LINE SPORT

MUFFLER ELIMINA KAT

SCHEMATIC



ELENCO PARTI / PARTS LIST

#	QTÀ / QTY	DESCRIZIONE / DESCRIPTION	CODICE / CODE
1	1	Tubo di raccordo / Link pipe	9773D022C1A
2	1	Tubo di raccordo / Link pipe	9773D022C1B
3	1	Tubo di raccordo / Link pipe	9773D022C1C
4	1	Tubo di raccordo 2-1 / Link pipe 2-1	9773D022C1D
5	7	Molla media / Middle spring	50.73.359.1
6	7	Tubo in gomma per molla / Rubber pipe for spring	50.73.210.1
7	2	Tappo per sonda lambda / Stopper for lambda probe	50.73.198.1
8	2	Tappo per sonda CO / Stopper for CO probe	50.71.025.1
9	2	Flangia / flange	50.73.462.1
10	2	Boccola / Bush	50.73.461.1
11	1	Dado 8 MA flangiato / Flanged nut 8 MA	50.73.393.1
12	1	Rondella in alluminio / Aluminium washer	50.73.248.1
13	1	Vite M8x40 / Screw M8x40	50.73.075.1